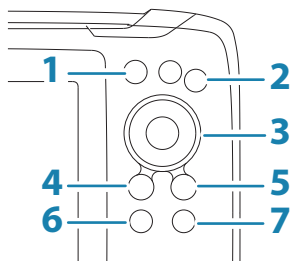


**5 HDI, 5 TS, 7x GPS TS, 7 HDI, 7 TS, 9 HDI, 9 TS and 12 TS models**

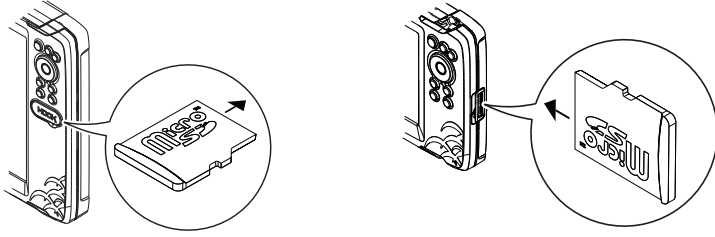
**Front controls**



<b>1</b>	<b>Pages</b>	Press to activate the Home page.
<b>2</b>	<b>Zoom in/out</b>	Press to zoom the image. Press both keys simultaneous to create a MOB (Man Over Board) waypoint at the vessel's position.
<b>3</b>	<b>Arrows</b>	On any full screen page: press to position the cursor on the image. Press to pan the image in any direction. On multi-panel pages: press to select panel. In menus and dialogs: press to highlight an option.
<b>4</b>	<b>Exit (X)</b>	On a maximized multi-panel page: press to return to the multi-panel page. In menus and dialogs: press to return to previous menu level and to exit a dialog.
<b>5</b>	<b>Menu/Enter</b>	On any full screen page with no menu or dialog active: press to display the menu. On multi-panel pages: press to maximize the current selected panel. In menus and dialogs: press to confirm a selection.
<b>6</b>	<b>Cursor/Waypoint</b>	Press to activate/deactivate the cursor. Press and hold to save a waypoint.
<b>7</b>	<b>Power</b>	Press to display the System Controls dialog. Press and hold to power the unit on/off.

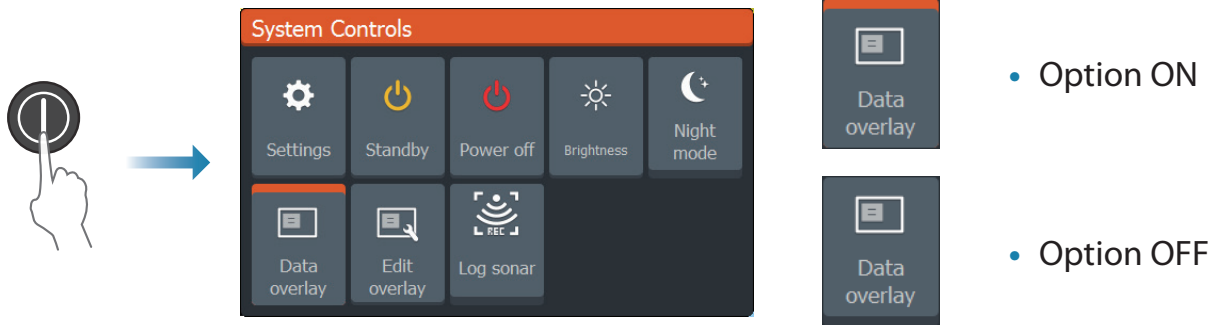


## Micro SD card



The card reader position depends on model.

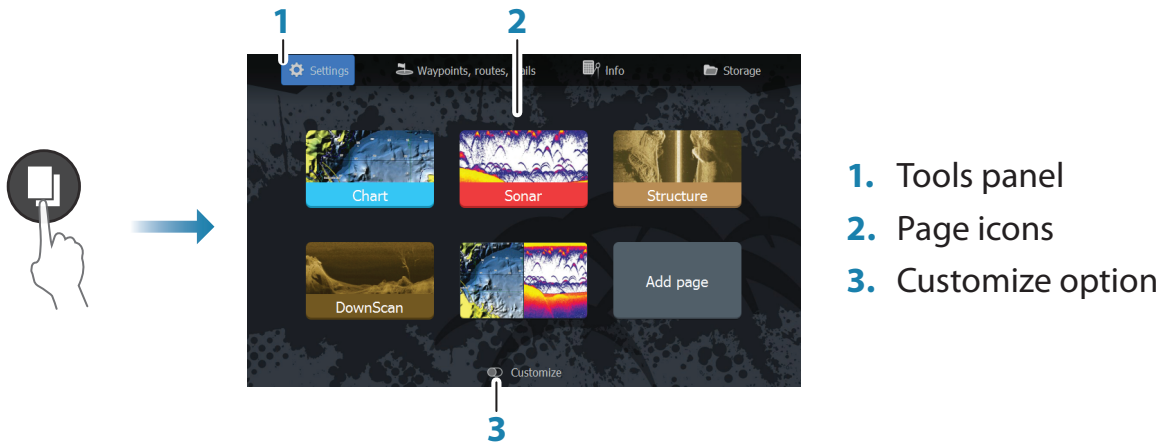
## System controls dialog



## Display illumination

- Set brightness and select day/night mode from the System Controls dialog
- Repeat short presses on the Power key to cycle the backlight brightness

## The Home page

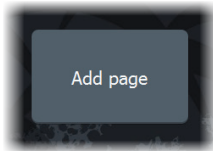


→ **Note:** Page icons on the Home page vary with model type.

## Pages

Select a page icon on the Home page to display a page.

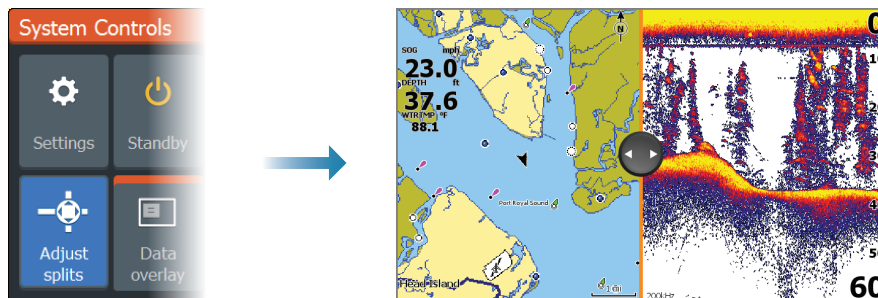
## Custom pages



- Select the **Add Page** icon to create a custom page
- Switch **Customize** ON to edit custom pages

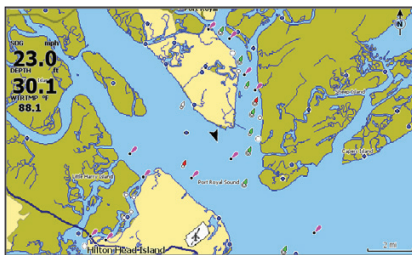
## Multi-panel pages

- With cursor not active on any panel: switch active panel by using the Arrow keys. An active panel is indicated with an orange border
- Activate the cursor by pressing the Cursor/Waypoint key, then use the arrow keys to position the cursor
- Maximize the active panel by pressing the Menu/Enter key. Press the X key to go back to the multi-panel page
- Adjust panel size by selecting **Adjust** in the System controls dialog, then use the Arrow keys to set preferred panel size. Confirm the layout by pressing the Menu/Enter key

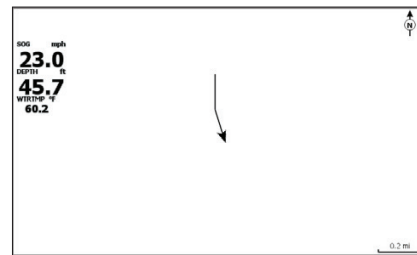


→ **Note:** You must maximize a panel in a multi-panel page to use the panel menu.

## Charts and GPS plotter pages



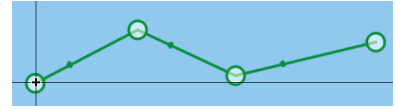
*Chart page (not available for 7x TS models)*



*GPS Plotter page (7x TS models)*

- Zoom the image by using the Zoom keys
- Pan the image in any direction by using the Arrow keys
- Display item information by positioning the cursor on an item and then pressing the Menu/Enter key

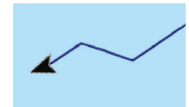
## Creating a route on a chart/GPS Plotter page



1. Activate a full screen page or maximize the panel on a multi-panel page
2. Press the Menu/Enter key to activate the menu, then select the **New route** option in the menu
3. Press the Arrow keys to position the first route point, then press Menu/Enter key to confirm the position
4. Repeat step 3 to position additional route points
5. Press the X key to save the route

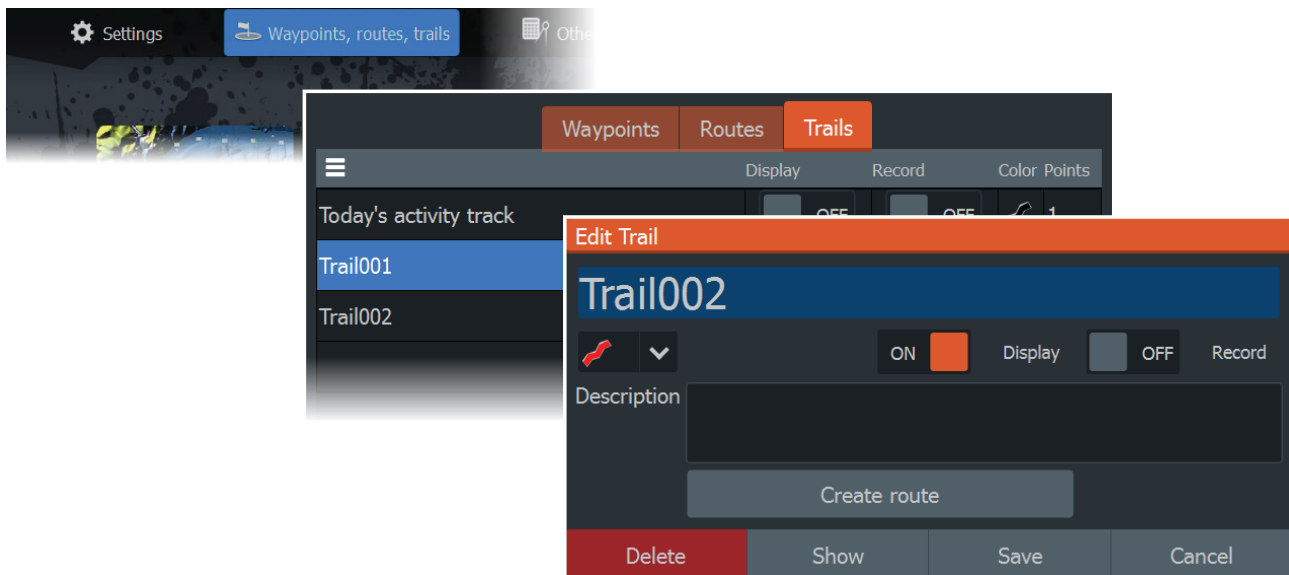
## Trails

The system automatically tracks and draws the vessel's movement on the chart/GPS Plotter panel. Trails are managed from the Trails dialog.



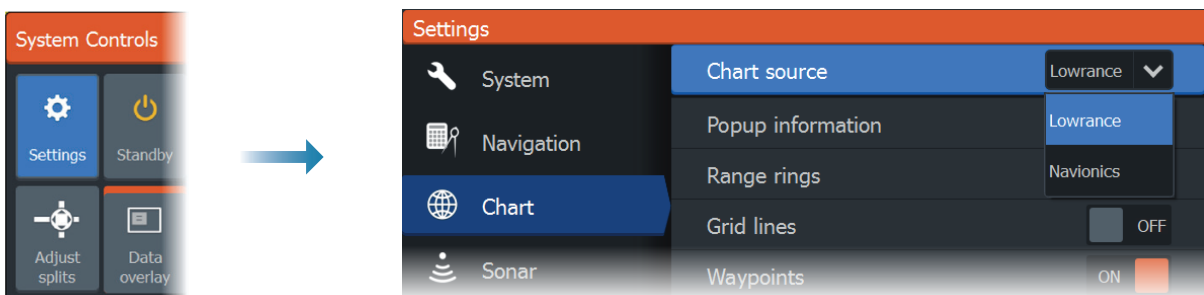
To display the trails dialog:

1. Select **Waypoints, Routes, Trails** from the Home page
2. Select the **Trails** tab in the dialog
3. Select the trail you want to edit

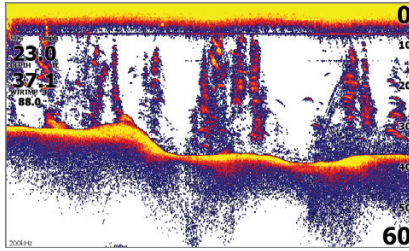


## Change chart source if card is inserted

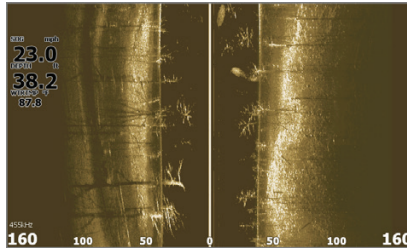
→ **Note:** Charts not available for 7x TS models.



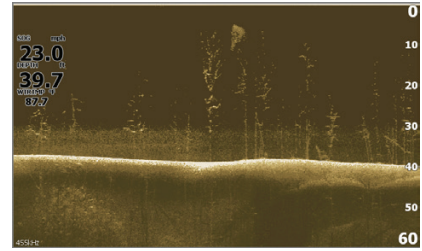
## Sonar, StructureScan and DownScan pages



*Sonar*



*StructureScan  
(TripleShot models)*

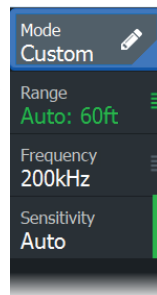
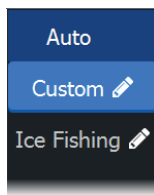
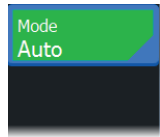


*DownScan*

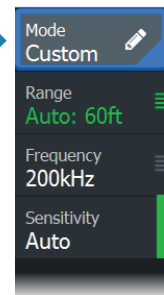
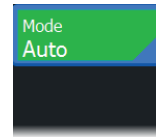
- Zoom the image by using the Zoom keys
- Use the Arrow keys to view the sonar history

By default the unit is set to **Auto** mode, and all settings are automated.

- Change to **Custom** mode to allow for customizing the settings.



*Sonar*



*StructureScan and DownScan*

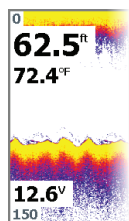
## Creating waypoints

Press and hold the Cursor/Waypoint key to save a new waypoint.

- With cursor inactive, the waypoint is placed at the vessel's position
- With cursor active, the waypoint is placed at the cursor position



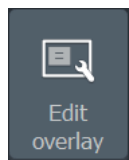
## Overlay data



The data type can be changed, and the item position on the image is selectable.

The data items can be turned on/off from the System Controls dialog.

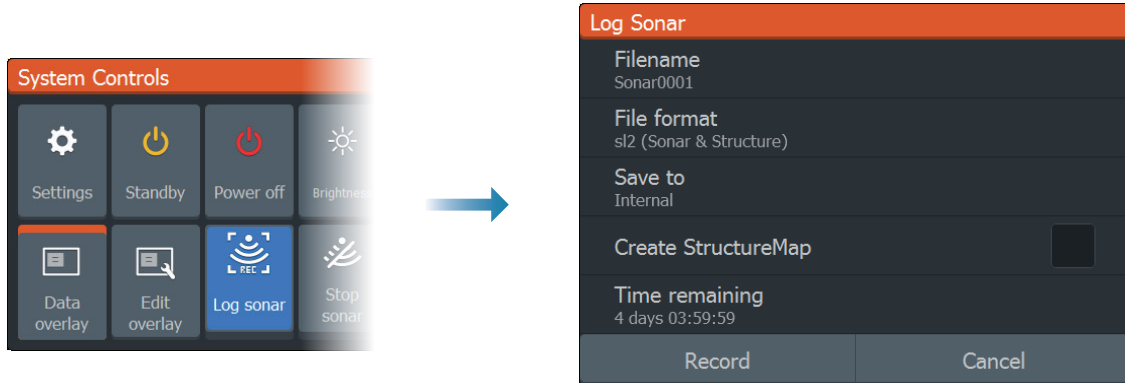
Each data item can be removed individually from the panel:



1. Select the **Edit overlay** option in the System Controls dialog to turn the unit into edit mode
2. Press the Menu/Enter key to display edit options
3. Press the X key to leave edit mode

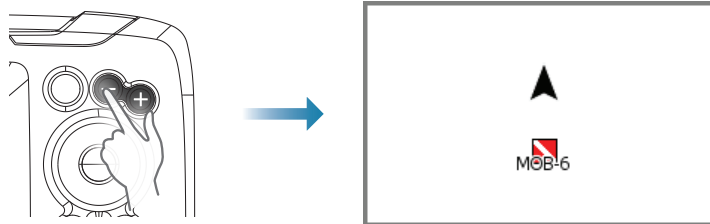
## Logging sonar data

Sonar data can be logged and saved to internal memory.



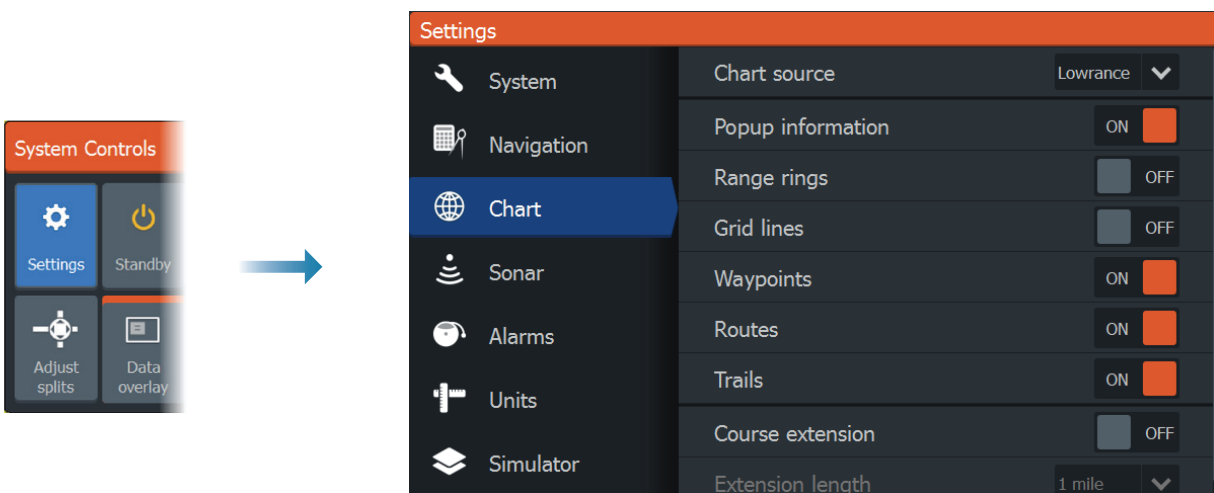
## Creating a Man Over Board (MOB) waypoint

Activate a MOB waypoint by pressing both Zoom keys simultaneously.



## Settings dialogs

Used for system configuration.



## Product manuals

For the full Operator manual, technical specifications and declarations, refer to the product website on: [www.lowrance.com](http://www.lowrance.com).